

Cellular Inclusion Bodies of Mutant Huntingtin Exon 1 Obscure Small Fibrillar Aggregate Species

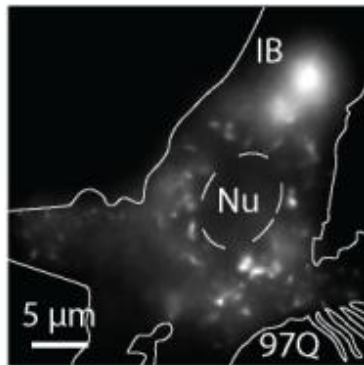
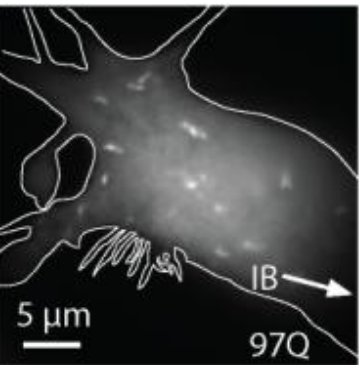
Steffen J. Sahl*, Lucien E. Weiss*, Whitney C. Duim,
Judith Frydman, and W. E. Moerner

*equal contributions, contact: wmoerner@stanford.edu or sjsahl@stanford.edu



Huntingtin (Htt): expanded polyglutamine (polyQ) tract causes Huntington's disease (HD)

Visualization of **Htt-ex1 aggregates** at the nanoscale by single-molecule fluorescence super-resolution imaging in a PC12m cell model

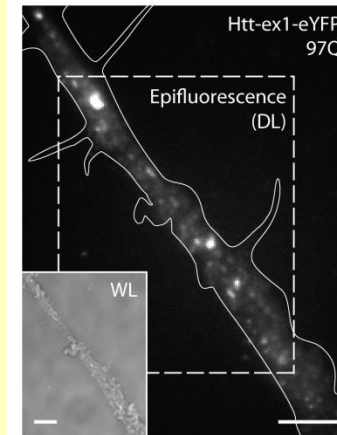


Intra-cellular aggregation is complex, with aggregate sub-populations:

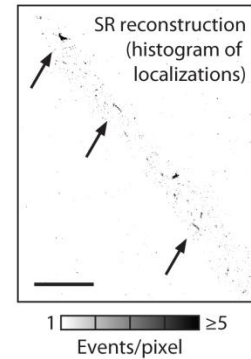
inclusion bodies (IBs), perinuclear aggregates (coalesced fibers), cytosolic fibers, fibers in axons and dendrites

Fibrillar aggregates grow to 1-2 μm (never observed longer) and then bundle/collide with other fibers.

Fibrillar aggregates in axonal process

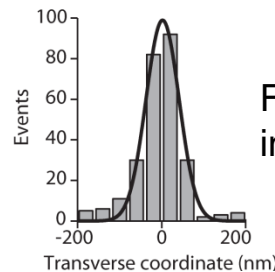
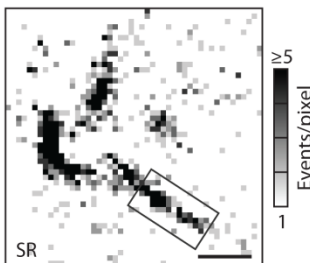
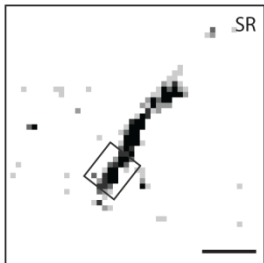
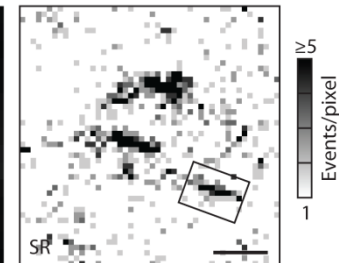
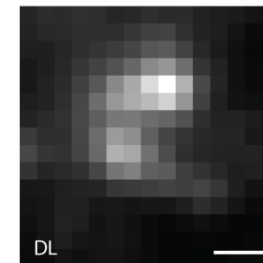


(Scale bars: 5 μm)



Diffraction-limited (DL)

Super-resolution (SR)



Fibrillar aggregates in cell body

Scale bars: 500 nm

Scientific Reports 2, 895 (2012)
[online at www.nature.com/srep]